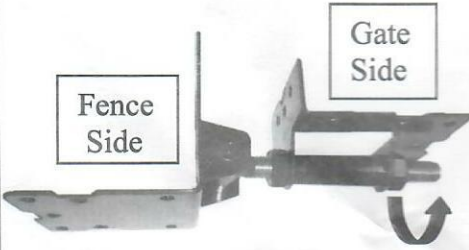


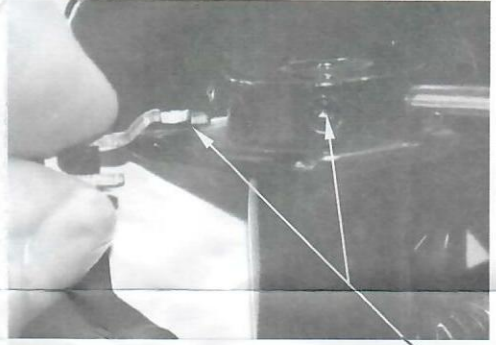
**Must rotate Gate side of hinge  
To Final Mounting Position !!!**

**New Cam Clip!  
No more Pins!!!**



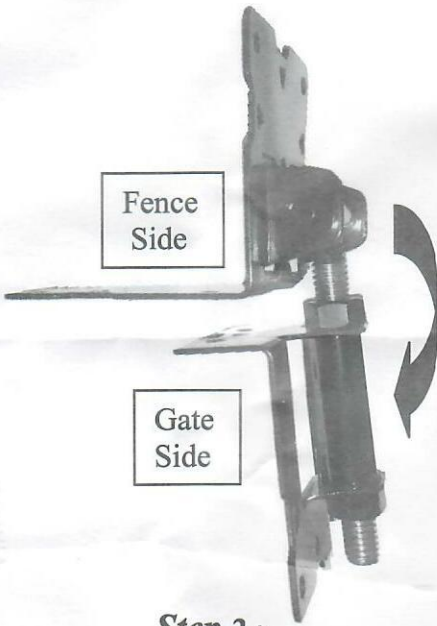
***Step 1 : Incorrect position***

Must rotate the gate right side mounting bracket 180° to Final mounting position !



***Step 1 :***

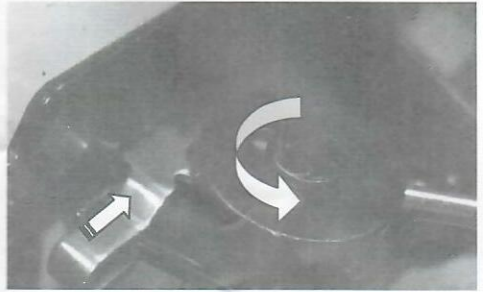
Slide Clip lining up tip with hole while winding with bar See Step 2



***Step 2 :***

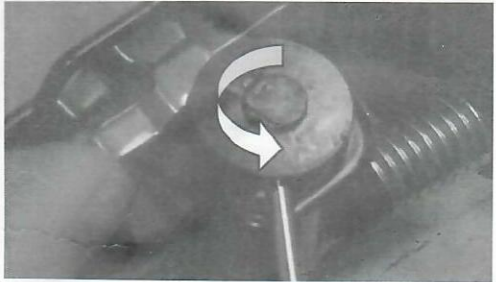
Pivot & close to final mounting position.

***Final Mounting Position !!!***



***Step 2 :***

Cam tip will slide into hole and lock



***Step 3 :***

To increase tension hold finger on clip & Wind bar until cam locks into next hole