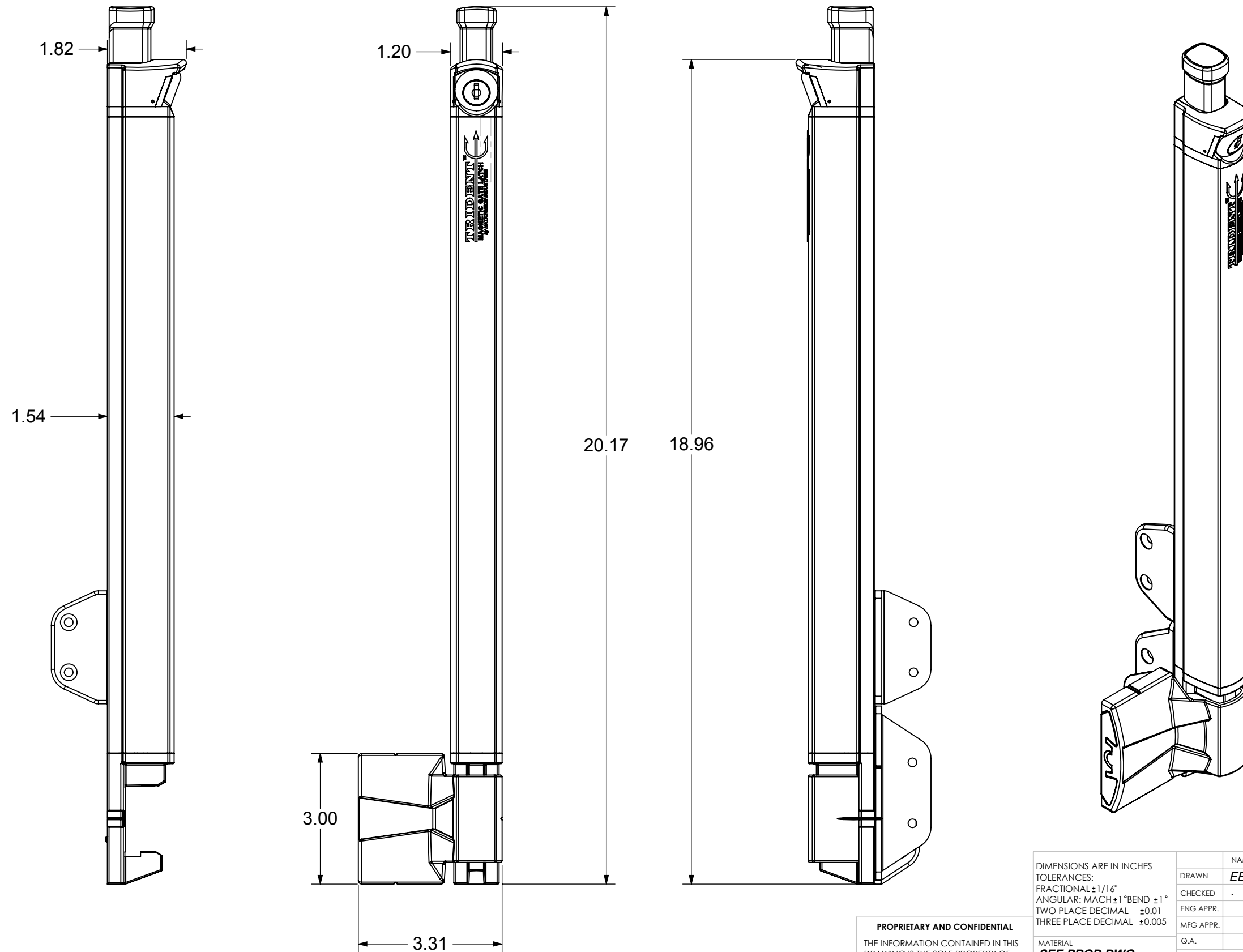


PART #	COLOR
TRIDENT20-BK	BLACK
TRIDENT20-WH	WHITE

REVISIONS				
ECR/DCR	REV.	DESCRIPTION	DATE	APPD
-	-	INITIAL RELEASE	08/01/13	-
-	1	REVISED KEEPER MAGNET COVER AND DATE INSERT	05/05/14	-



DIMENSIONS ARE IN INCHES		NAME	DATE
TOLERANCES:		DRAWN	EET 8-1-13
FRACTIONAL $\pm 1/16"$		CHECKED	.
ANGULAR: MACH $\pm 1^\circ$ BEND $\pm 1^\circ$		ENG APPR.	
TWO PLACE DECIMAL $\pm 0.01$		MFG APPR.	
THREE PLACE DECIMAL $\pm 0.005$		Q.A.	
MATERIAL		COMMENTS:	
SEE PROD DWG			
FINISH			
SEE PROD DWG			
DO NOT SCALE DRAWING			

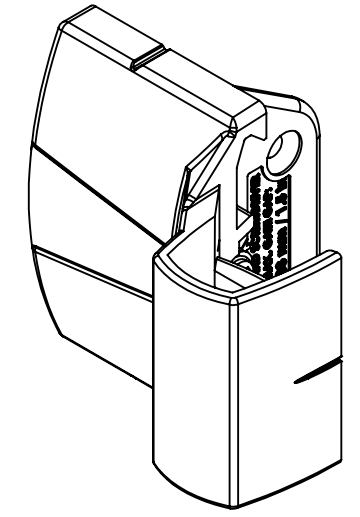
**PROPRIETARY AND CONFIDENTIAL**  
 THE INFORMATION CONTAINED IN THIS DRAWING IS THE SOLE PROPERTY OF NATIONWIDE INDUSTRIES. ANY REPRODUCTION IN PART OR AS A WHOLE WITHOUT THE WRITTEN PERMISSION OF NATIONWIDE INDUSTRIES IS PROHIBITED.

**NATIONWIDE INDUSTRIES**

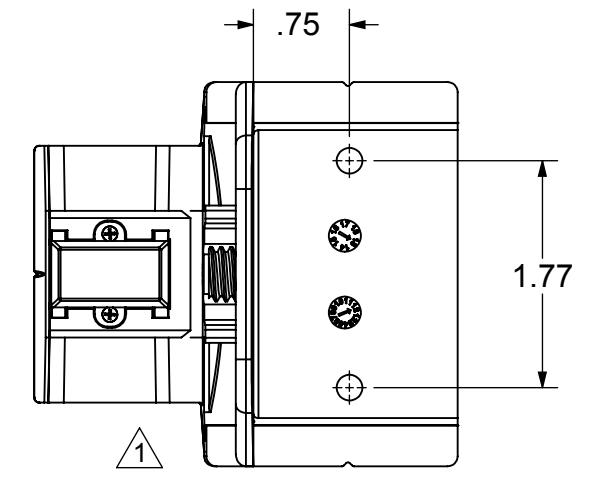
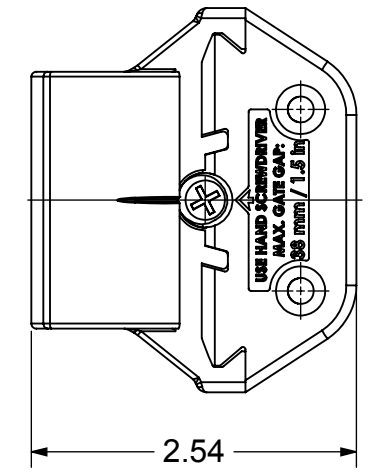
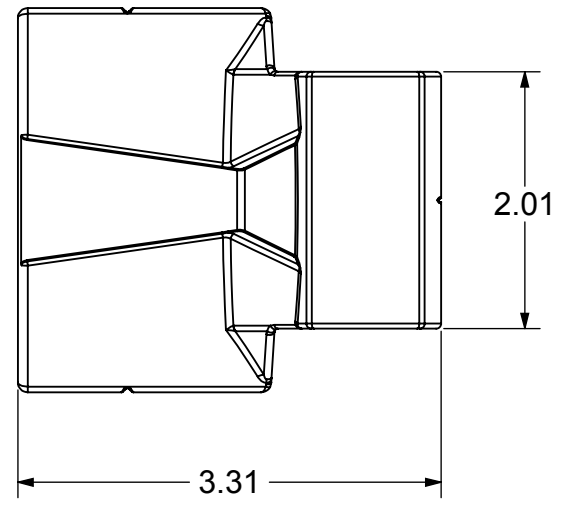
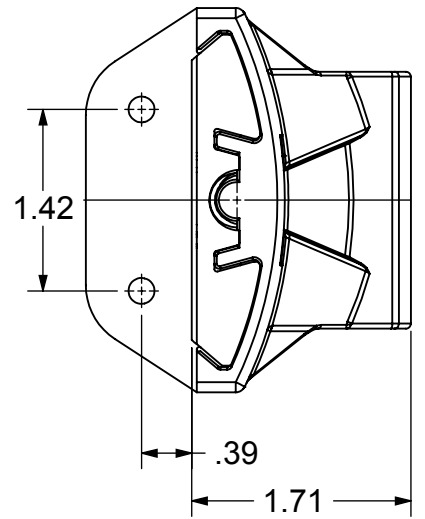
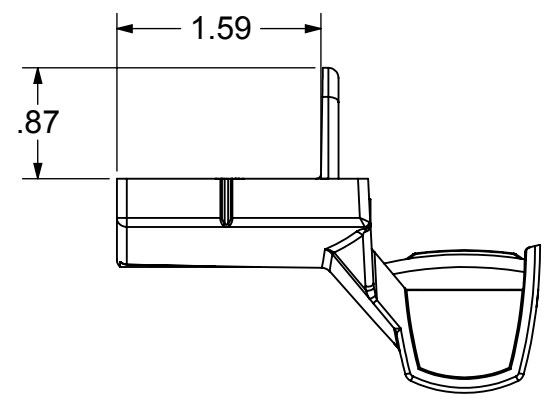
**TOP PULL LATCH ASSEMBLY OUTLINE & DIMENSIONS**

SIZE	DWG. NO.	REV.
B	CS--TRIDENT20	1

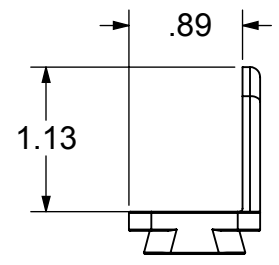
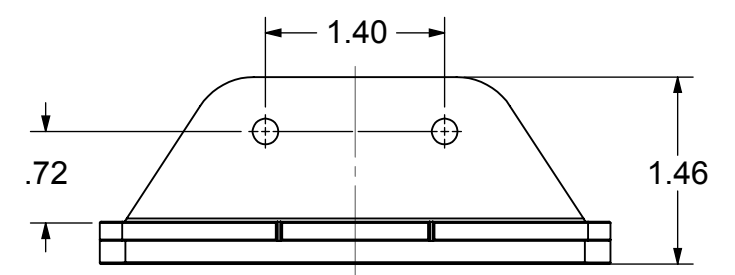
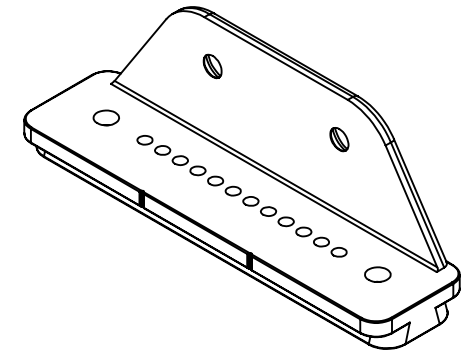
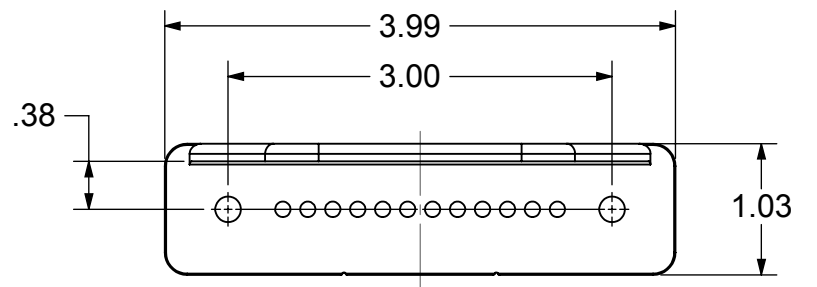
SCALE: 1:2.5    WEIGHT:    SHEET 1 OF 3



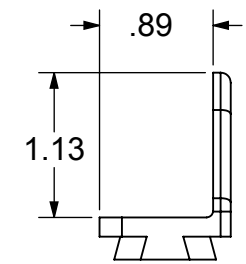
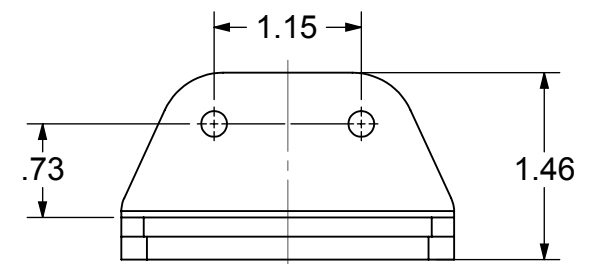
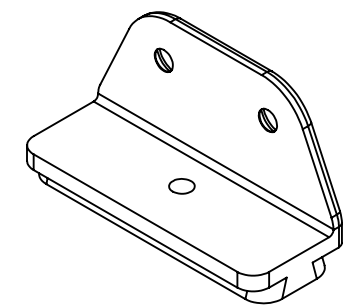
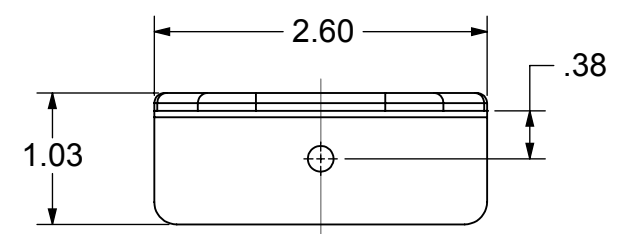
**KEEPER**



**LOWER MOUNTING BRACKET**

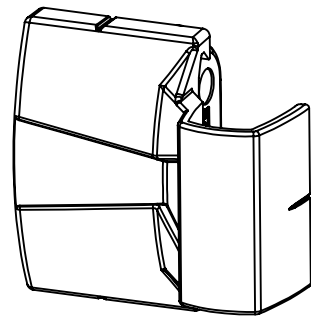


**UPPER MOUNTING BRACKET**



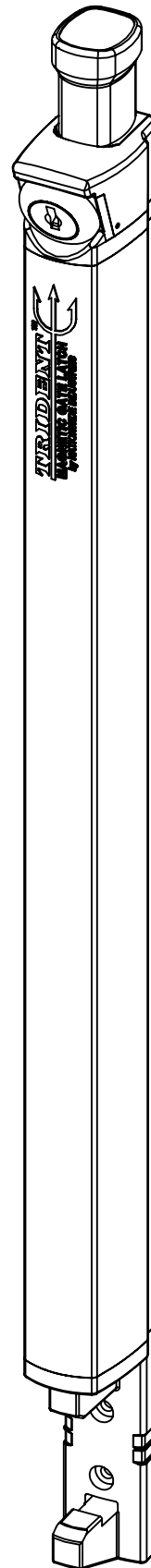
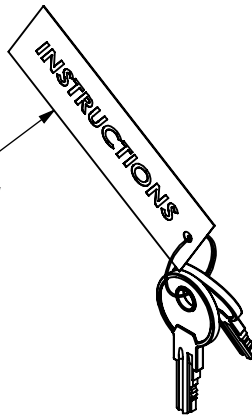
**PROPRIETARY AND CONFIDENTIAL**  
 THE INFORMATION CONTAINED IN THIS DRAWING IS THE SOLE PROPERTY OF NATIONWIDE INDUSTRIES. ANY REPRODUCTION IN PART OR AS A WHOLE WITHOUT THE WRITTEN PERMISSION OF NATIONWIDE INDUSTRIES IS STRICTLY PROHIBITED.  
 DO NOT SCALE DRAWING

<b>TOP PULL LATCH ASSEMBLY OUTLINE &amp; DIMENSIONS</b>		
SIZE <b>B</b>	DWG. NO. <b>CS--TRIDENT20</b>	REV. <b>1</b>
SCALE:2:3	WEIGHT:	SHEET 2 OF 3



**(1) STRIKER ASSEMBLY**

KEY TAG  
NON-TEARABLE  
PAPER



**(1) LATCH ASSEMBLY  
with KEY**

**TRIDENT20** 

**PACKAGING INSTRUCTIONS:**

**1) POLY-BAG MOUNTING SCREW KIT**

**KIT CONTAINS:**

(11) #10 x .75" SELF-DRILLING PHILIPS FLAT HD SCREWS

(1) #8 x .38" PHILIPS FLAT HD SCREW

(1) UPPER MOUNTING BRACKET

(1) LOWER MOUNTING BRACKET

**2) "Trident" PRINTED POLY-BAG:**

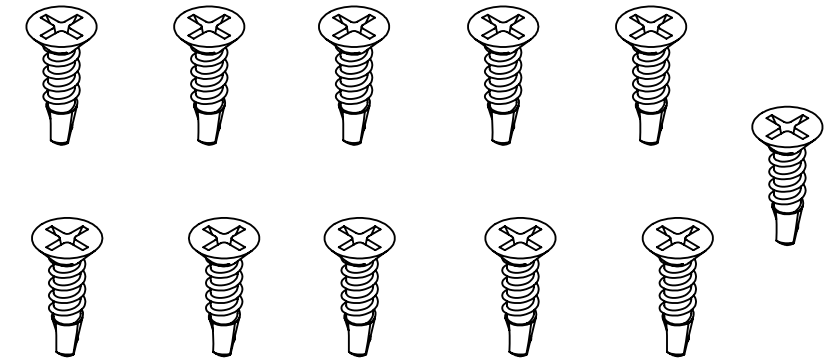
(1) TOP PULL LATCH ASSEMBLY

(1) STRIKER ASSEMBLY

(1) MOUNTING SCREW KIT

(1) "Nationwide" INSTRUCTION SHEET

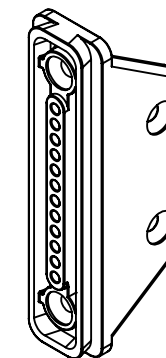
(1) WARRANTY SHEET



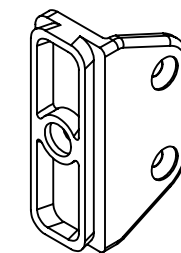
**(11) #10 x .75" SELF-DRILLING PHILIPS FLAT HD SCREW  
MAT'L: 18-8 STAINLESS STEEL  
FINISH: PAINT TO MATCH LATCH**



**(1) #8 x .38" PHILIPS FLAT HD SCREW  
MAT'L: 18-8 STAINLESS STEEL  
FINISH: PAINT TO MATCH LATCH**



**(1) LOWER MOUNTING BRACKET**



**(1) UPPER MOUNTING BRACKET**

<b>PROPRIETARY AND CONFIDENTIAL</b>		<b>TOP PULL LATCH ASSEMBLY OUTLINE &amp; DIMENSIONS</b>	
THE INFORMATION CONTAINED IN THIS DRAWING IS THE SOLE PROPERTY OF NATIONWIDE INDUSTRIES. ANY REPRODUCTION IN PART OR AS A WHOLE WITHOUT THE WRITTEN PERMISSION OF NATIONWIDE INDUSTRIES IS STRICTLY PROHIBITED.			
SIZE <b>B</b>	DWG. NO. <b>CS--TRIDENT20</b>	REV. <b>1</b>	
SCALE:1:2	WEIGHT: 1.762 LB.	SHEET 3 OF 3	

DO NOT SCALE DRAWING