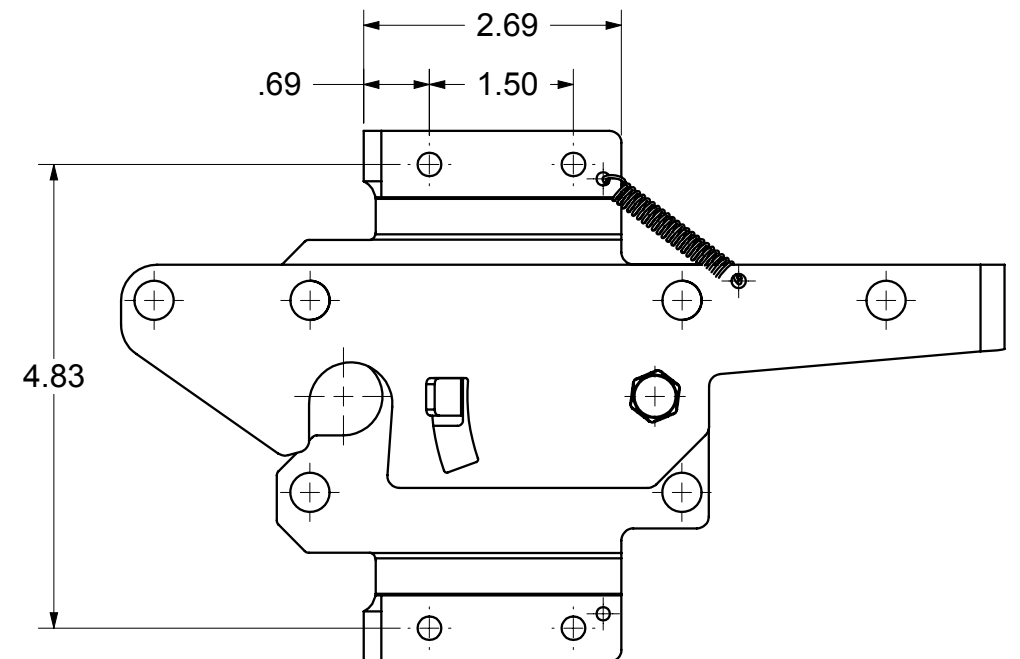
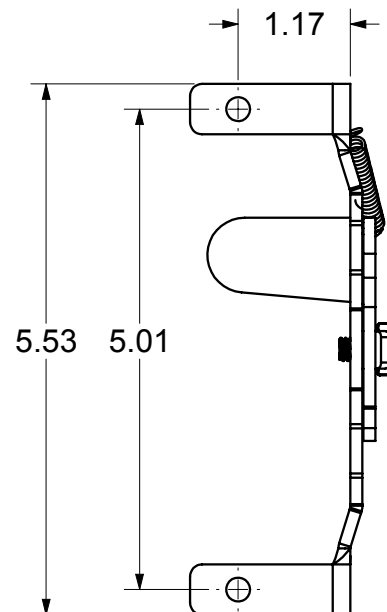
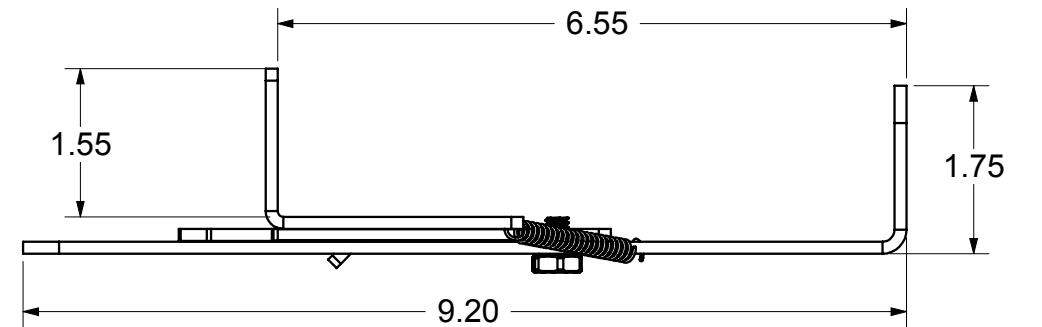
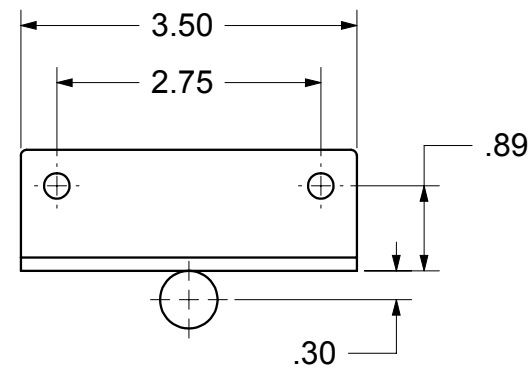
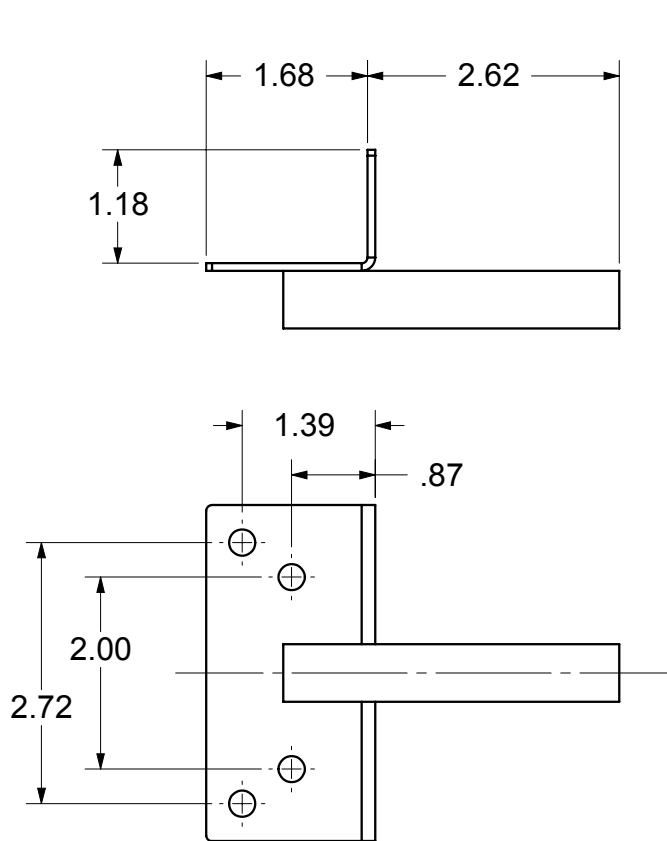
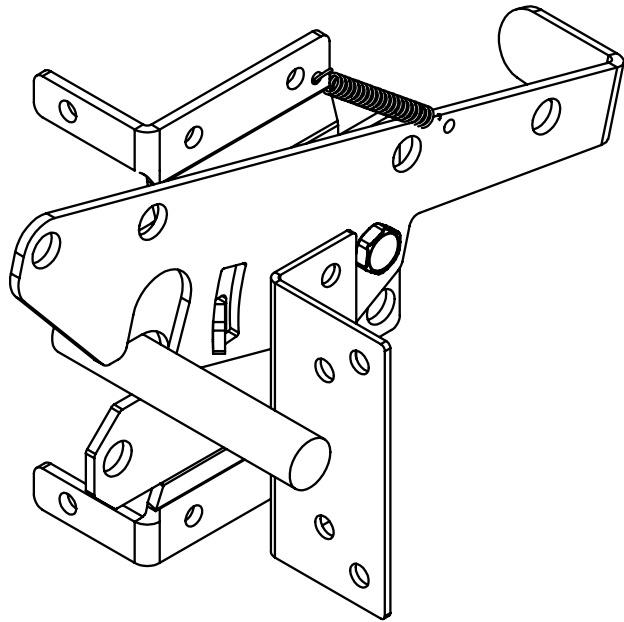


NOTES:

1. PART TO HAVE A NON-ABRASIVE FINISH.
2. PART TO HAVE MIN. DRAFT ANGLE AS TOOLING REQUIRES.
3. ANY AND ALL CHANGES TO MATERIAL OR FINISH MUST BE APPROVED BY NWI.
4. ALL DIAMETERS TO BE CONCENTRIC WITHIN .005 UNLESS OTHERWISE SPECIFIED.
5. ALL CORNERS TO BE .015 MAX R OR CHAMFER OR OTHERWISE NOTED.
6. ALL DIMENSIONS ARE FINISHED PART DIMENSIONS.



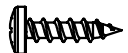
REVISIONS			
ECR/DCR	REV.	DESCRIPTION	DATE
-	-	INITIAL RELEASE	4-5-11

APPD
-



SELF DRILLING SCREW
(12) #14 X 1" HEX WASHER
HEAD, 18-8 SS

OR**



SHEET METAL SCREW
(12) #14 X 3/4" PAN HEAD
PHILIPS, 18-8 SS

** SEE CHART FOR SCREW SELECTION

PACKAGING INSTRUCTIONS:

- 1) #14 MOUNTING SCREWS TO BE POLYBAGGED
(12) SCREWS PER PACKAGE.
- 2) INDIVIDUAL POLYBAGGED SET TO CONTAIN:
(1) PRE-ASSEMBLED LATCH
(1) STRIKER BRACKET
(1) PACKAGE OF #14 MOUNTING SCREWS.
- 3) BOX TO CONTAIN 20 LATCH SETS.

DRAFT COPY

PART #	COLOR	L*	a*	b*	G*	SCREW
NW38308NU-SSB	BLACK	24	0	0	35	SHEET METAL
NW38308NU-SST	TAN	77.51	1.35	12.21	48	SHEET METAL
NW38308NU-SSW	WHITE	94.5	-1.4	1.5	80	SHEET METAL
NW38308NU-SSBD	BLACK	24	0	0	35	SELF DRILLING
NW38308NU-SSWD	WHITE	94.5	-1.4	1.5	80	SELF DRILLING

MATERIAL: 304 SS
FINISH: INTERPON 600 POWDERCOAT

DIMENSIONS ARE IN INCHES
TOLERANCES:
FRACTIONAL $\pm 1/16"$
ANGULAR: MACH $\pm 1^\circ$ BEND $\pm 1^\circ$
TWO PLACE DECIMAL ± 0.01
THREE PLACE DECIMAL ± 0.005

PROPRIETARY AND CONFIDENTIAL
THE INFORMATION CONTAINED IN THIS
DRAWING IS THE SOLE PROPERTY OF
NATIONWIDE INDUSTRIES. ANY
REPRODUCTION IN PART OR AS A WHOLE
WITHOUT THE WRITTEN PERMISSION OF
NATIONWIDE INDUSTRIES IS PROHIBITED.



**ONE SIDE LOCKABLE
SS POST LATCH
W/SPRING RETURN**

SIZE	DWG. NO.	REV.
B	CS-NW38308NU	-
SCALE:1:2	WEIGHT:	SHEET 1 OF 1