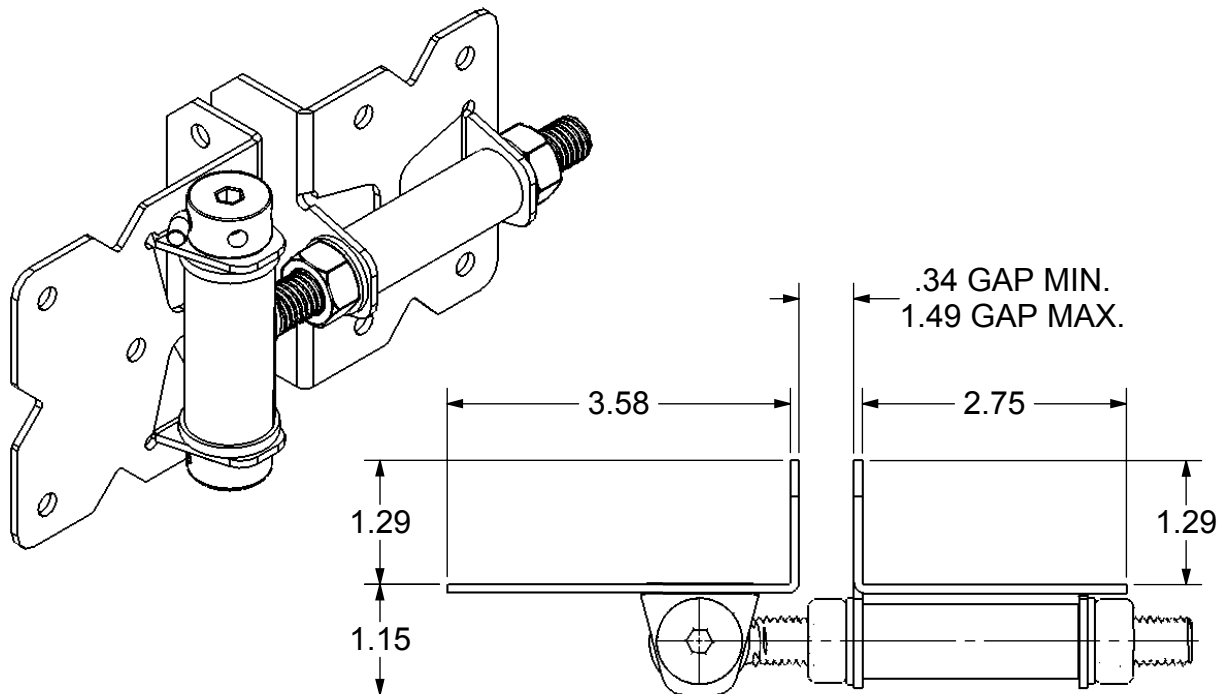


		REVISIONS			
ECR/DCR	REV.	DESCRIPTION	DATE	APPD	
-	-	INITIAL RELEASE	11-16-12	AMM	



**POLYBAGGED SET TO CONTAINING:**

**(2) HINGE ASSEMBLIES (without Adjustment Pin)**  
**INDIVIDUALLY POLYBAGGED**

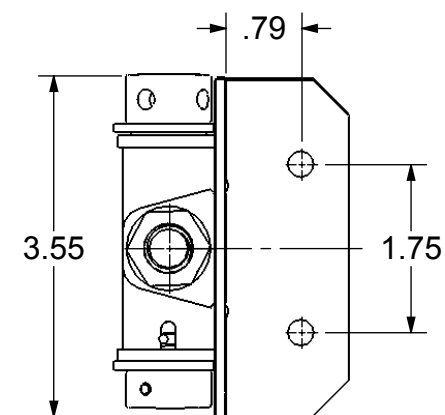
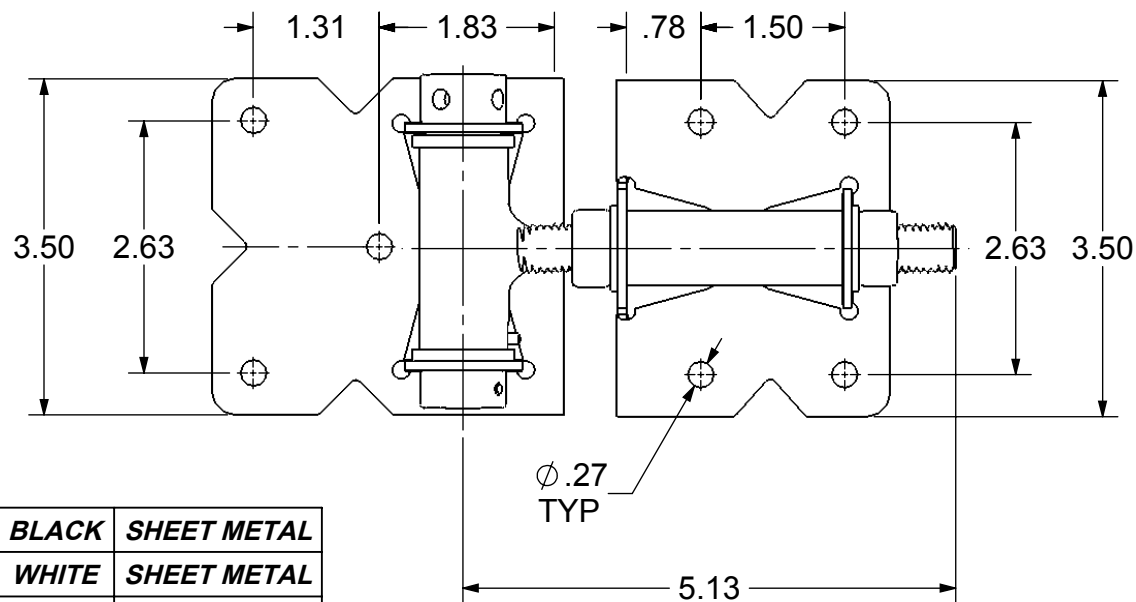
**(1) HARDWARE PACKAGE CONSISTING OF:**

**(22) MOUNTING SCREWS**

**(2) ADJUSTMENT PINS**

**(1) 1/4" HEX ADJUSTMENT WRENCH**

**(1) INSTRUCTION CARD**



NW171SCP-SSB	BLACK	SHEET METAL
NW171SCP-SSW	WHITE	SHEET METAL
NW171SCP-SSBD	BLACK	SELF DRILL
NW171SCP-SSWD	WHITE	SELF DRILL
PART NO.	COLOR	SCREWS

DIMENSIONS ARE IN INCHES  
TOLERANCES:  
FRACTIONAL  $\pm 1/16"$   
ANGULAR: MACH  $\pm 1^\circ$  BEND  $\pm 1^\circ$   
TWO PLACE DECIMAL  $\pm 0.01$   
THREE PLACE DECIMAL  $\pm 0.005$

PROPRIETARY AND CONFIDENTIAL  
THE INFORMATION CONTAINED IN THIS  
DRAWING IS THE SOLE PROPERTY OF  
NATIONWIDE INDUSTRIES. ANY  
REPRODUCTION IN PART OR AS A WHOLE  
WITHOUT THE WRITTEN PERMISSION OF  
NATIONWIDE INDUSTRIES IS PROHIBITED.



**NARROW to NARROW  
SELF-CLOSING  
ADJUSTABLE HINGE**

SIZE DWG. NO. **CS--NW171SCP** REV. --  
SCALE: 1:2 WEIGHT: SHEET 1 OF 1